



## How To Mirror a Pattern Piece

Mirroring is the same as flipping the pattern piece.

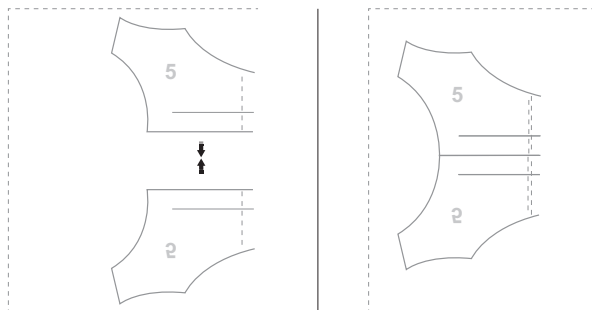
*Note! Spliced pattern pieces cannot be mirrored.*

1. Long-press to select your pattern piece and drag-and-drop the piece to the workspace.
2. Tap to select the pattern piece on your workspace that you want to mirror.
3. Select "Mirror vertical" to flip the pattern piece vertically. 
4. Select "Mirror horizontal" to flip the pattern piece horizontally. 
5. Select "OK".

## To Convert a Cut-on-fold Pattern Piece

A sewing pattern that has two symmetrical sides can be cut on the fold of your fabric. The Ditto app enables you to convert a cut-on-fold pattern piece to a pattern for unfolded fabric.

1. Select your pattern piece and drag-and-drop the pattern piece to the workspace twice.
2. Mirror one piece across the fold line. Refer to "To Mirror a Pattern" above.
3. Use 1 finger and Press-and-Move to join the pattern pieces together along the fold line.



*Note! Do not cut the center fold line when cutting.*